

Product features and grower benefits

► **Effective** It controls and reduces Citrus Leafminer populations and hinders development of chemical pesticide resistance.

► **Selectivity**

MalEx CLM targets only male Citrus Leafminer and will not harm beneficial insects or bees.

► **Residue-free** There are no residue or contamination worries, as food-safe MalEx CLM never contacts the fruit.

► **Worker Safety & Flexibility** There are no concerns about re-entry (12 hours) or pre-harvest interval.

► **No spray drift** There is no danger of over-spray, drift or inhalation. It can be applied in any wind or weather condition.

► **Accuracy** MalEx CLM can be accurately and easily placed where it is most needed.

► **Waterproof** MalEx CLM is unaffected by rain or overhead sprinklers. It stays where you put it, never entering the water table.

► **Reliable results in nurseries and irregular blocks**

MalEx CLM is effective in citrus nurseries, groves that are small (non-bearing) or irregular, and on sloped or windy terrain.



► **Enhanced control in IPM programs** MalEx CLM is fully compatible with any IPM strategy.

► **Dead male insects**

Obviously, dead moths can't mate, and they can't wind up in neighboring, untreated blocks.

Monitoring

Careful monitoring with pheromone-baited traps is essential for detecting the presence and magnitude

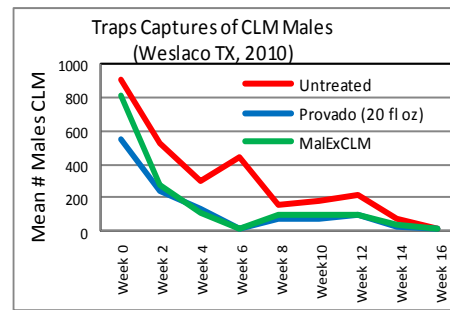


ALPHA SCENTS supplies a complete line of insect traps & pheromone lures.

of target pest and other secondary pest populations. MalEx CLM targets one species only. Inspect fruit and foliage for all pests at regular intervals. Consult your pest control advisor to determine if supplemental products are required.

Benefits of treatment:

MalEx CLM has a proven infield trials in Florida, Texas and California.

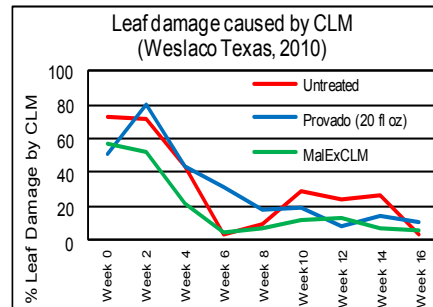


MalEx CLM has resulted in outstanding control of citrus leafminer when used as a stand-alone method or as



part of an IPM program. It substantially reduces or eliminates supplemental insecticide use.

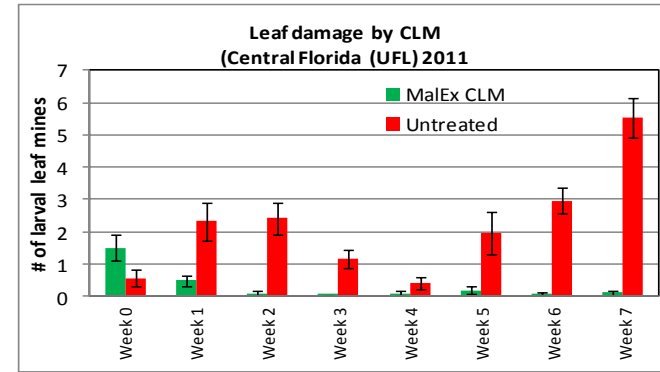
The lowest dose of insecticide ever used to control Citrus Leafminer: only 8.4 grams/acre.



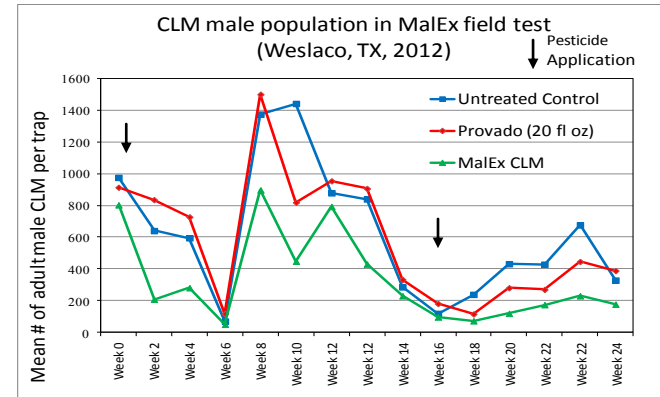
Benefits of treatment:

With MalEx treatment:

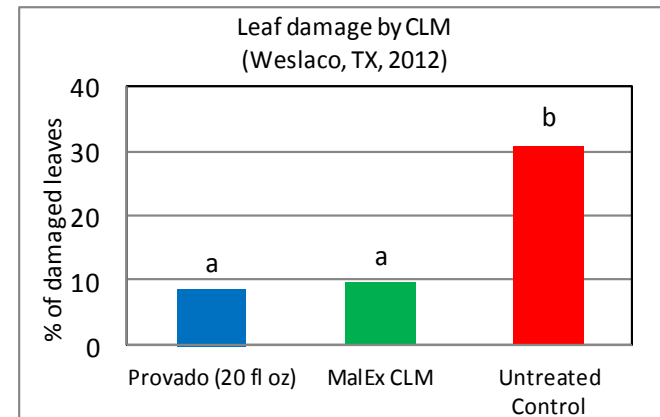
◆ A single application keeps pest damage below economical levels for up to 7 weeks.



◆ Male moth population can be suppressed substantially.



◆ Control of CLM as good or better than 20 fl oz of Provado.





Alpha Scents, Inc.

1089 Willamette Falls Dr.

West Linn, OR 97068

Alpha Scents provides high quality specialty products and consulting services.

Contact :

Darek Czokajlo, Ph.D.

Tel: 503-342-8611

sales@alphascents.com

www.alphascents.com

EPA Reg. No. 85354



MalEx CLM

**Attracts, kills & controls
Citrus Leafminer**

AVAILABLE 2014

► **Effective**

► **Selective**

► **Residue-free**



How it works:

pheromone to attract + insecticide to control

MalEx CLM combines the best aspects of two technologies: Pheromone attraction and traditional chemical insecticides. The resulting product provides pest control that is effective, selective and residue-free.

Each 50 microlitre droplet contains Imidacloprid, a potent knock-down insecticide, and a synthetic version of the pheromone released by a female moth to attract, or 'call', a mate.

The attractant and insecticide are combined in a UV-absorbing carrier material that provides a slow, uniform release of the powerful pheromone. Male moths are inevitably attracted to the small droplets of MalEx CLM with which they attempt to mate. Any contact with the product kills or disables them, thus preventing mating and subsequent egg-lay and larval infestation.

MalEx CLM uses pheromones as they were intended to be used: to attract males. They are not confused or overwhelmed. They are simply and biologically attracted. Then, the insecticide component of MalEx does its job, and takes them out of the mating cycle.

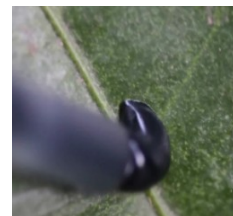


Male Citrus Leafminer mating with a droplet of MalEx CLM.

How to use it:

only 1200 tiny droplets per acre

MalEx CLM comes in an applicator tube complete with a calibrated pump that deposits metered droplets of product exactly where you want them. Only 1200 evenly-spaced droplets are needed to protect an acre



of trees or vegetables for up to six weeks. Droplets may be placed on either the leaf, central leader or a branch. Place the droplets where pest is the most active (for example: where trap catches of male moth are the highest).